

Gelsolin Antibody
Rabbit mAb
Catalog # AP91830**Specification**

Gelsolin Antibody - Product Information

Application **WB, IHC, FC, ICC**
Primary Accession **[P06396](#)**
Clonality **Monoclonal**
Other Names
ADF; AGEL; Brevin; Gelsolin; Gsn;

Isotype **Rabbit IgG**
Host **Rabbit**
Calculated MW **85698 Da**

Gelsolin Antibody - Additional Information

Dilution **WB~~1:1000**
IHC~~1:100~500
FC~~1:10~50
ICC~~N/A
Purification **Affinity-chromatography**
Immunogen **A synthesized peptide derived from human Gelsolin**
Description **Calcium-regulated, actin-modulating protein that binds to the plus (or barbed) ends of actin monomers or filaments, preventing monomer exchange (end-blocking or capping). It can promote the assembly of monomers into filaments (nucleation) as well as sever filaments already formed. Plays a role in ciliogenesis.**
Storage Condition and Buffer **Rabbit IgG in phosphate buffered saline , pH 7.4, 150mM NaCl, 0.02% sodium azide and 50% glycerol. Store at +4°C short term. Store at -20°C long term. Avoid freeze / thaw cycle.**

Gelsolin Antibody - Protein Information**Name** GSN**Function**

Calcium-regulated, actin-modulating protein that binds to the plus (or barbed) ends of actin monomers or filaments, preventing monomer exchange (end-blocking or capping). It can promote the assembly of monomers into filaments (nucleation) as well as sever filaments already formed (PubMed:19666512).

Plays a role in ciliogenesis (PubMed:20393563).

Cellular Location

[Isoform 2]: Cytoplasm, cytoskeleton.

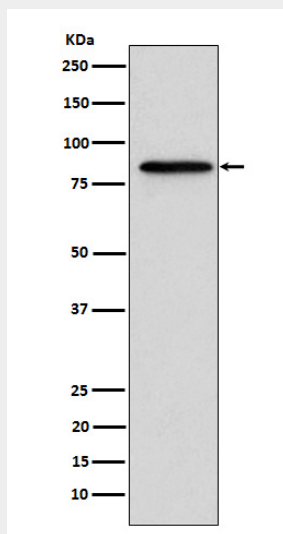
Tissue Location

Phagocytic cells, platelets, fibroblasts, nonmuscle cells, smooth and skeletal muscle cells

Gelsolin Antibody - Protocols

Provided below are standard protocols that you may find useful for product applications.

- [Western Blot](#)
- [Blocking Peptides](#)
- [Dot Blot](#)
- [Immunohistochemistry](#)
- [Immunofluorescence](#)
- [Immunoprecipitation](#)
- [Flow Cytometry](#)
- [Cell Culture](#)

Gelsolin Antibody - Images

Western blot analysis of Gelsolin expression in A431 cell lysate.